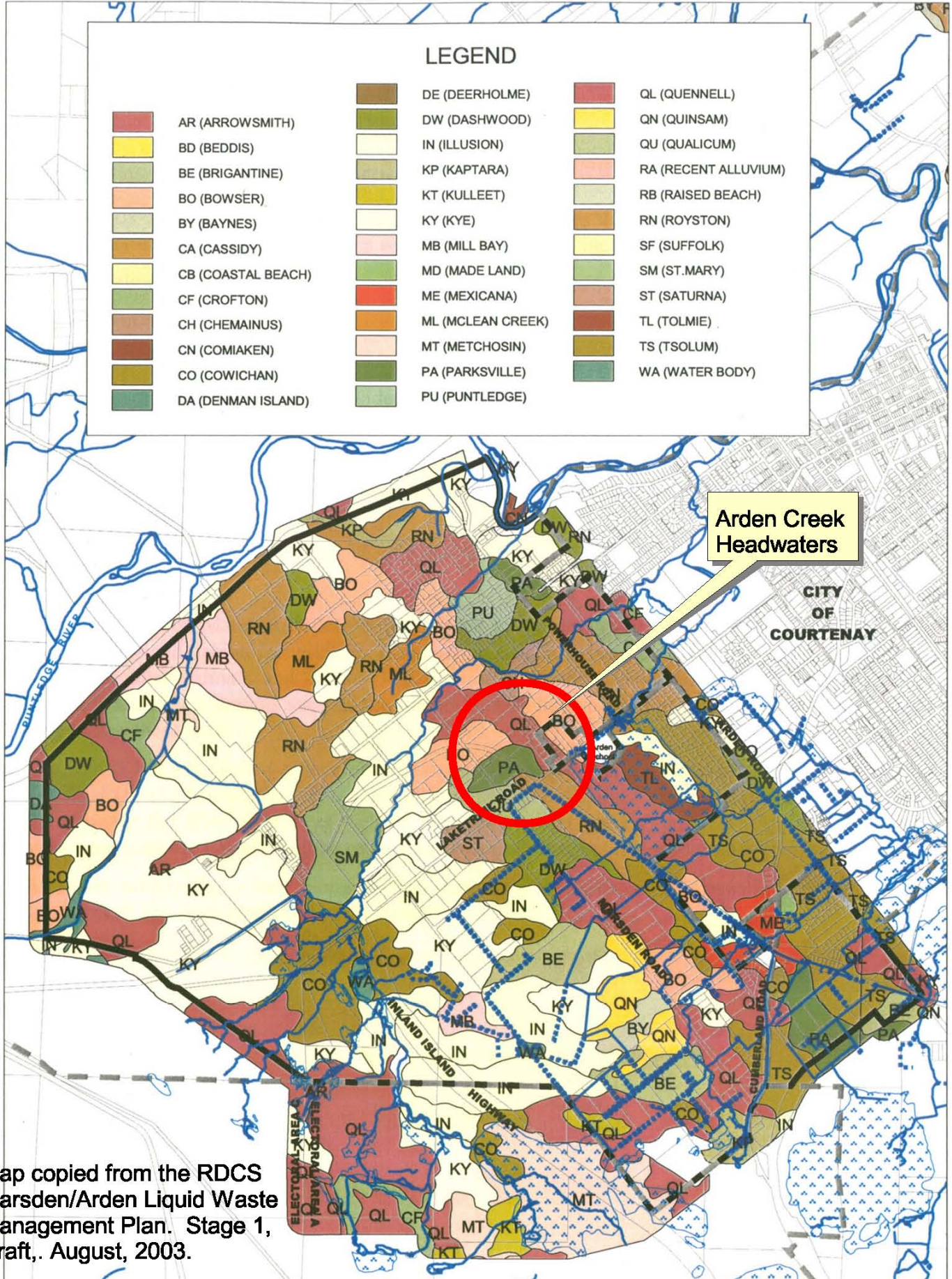


# Soil Types of the Marsden/Arden RDCS Liquid Waste Management Plan Area

LEGEND		
AR (ARROWSMITH)	DE (DEERHOLME)	QL (QUENNEL)
BD (BEDDIS)	DW (DASHWOOD)	QN (QUINSAM)
BE (BRIGANTINE)	IN (ILLUSION)	QU (QUALICUM)
BO (BOWSER)	KP (KAPTARA)	RA (RECENT ALLUVIUM)
BY (BAYNES)	KT (KULLEET)	RB (RAISED BEACH)
CA (CASSIDY)	KY (KYE)	RN (ROYSTON)
CB (COASTAL BEACH)	MB (MILL BAY)	SF (SUFFOLK)
CF (CROFTON)	MD (MADE LAND)	SM (ST. MARY)
CH (CHEMAINUS)	ME (MEXICANA)	ST (SATURNA)
CN (COMIAKEN)	ML (MCLEAN CREEK)	TL (TOLMIE)
CO (COWICHAN)	MT (METCHOSIN)	TS (TSOLUM)
DA (DENMAN ISLAND)	PA (PARKSVILLE)	WA (WATER BODY)
	PU (PUNTLIDGE)	



Map copied from the RDCS Marsden/Arden Liquid Waste Management Plan. Stage 1, Draft, August, 2003.